

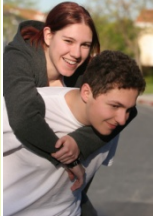


Youth/Young Adult Voice at the Agency Level (Y~VAL)

Developing an assessment of youth and young adult voice in organizational advising and decision making

*30th Annual
Research and Policy Conference on
Child, Adolescent and Young Adult Behavioral Health
6 March 2017*

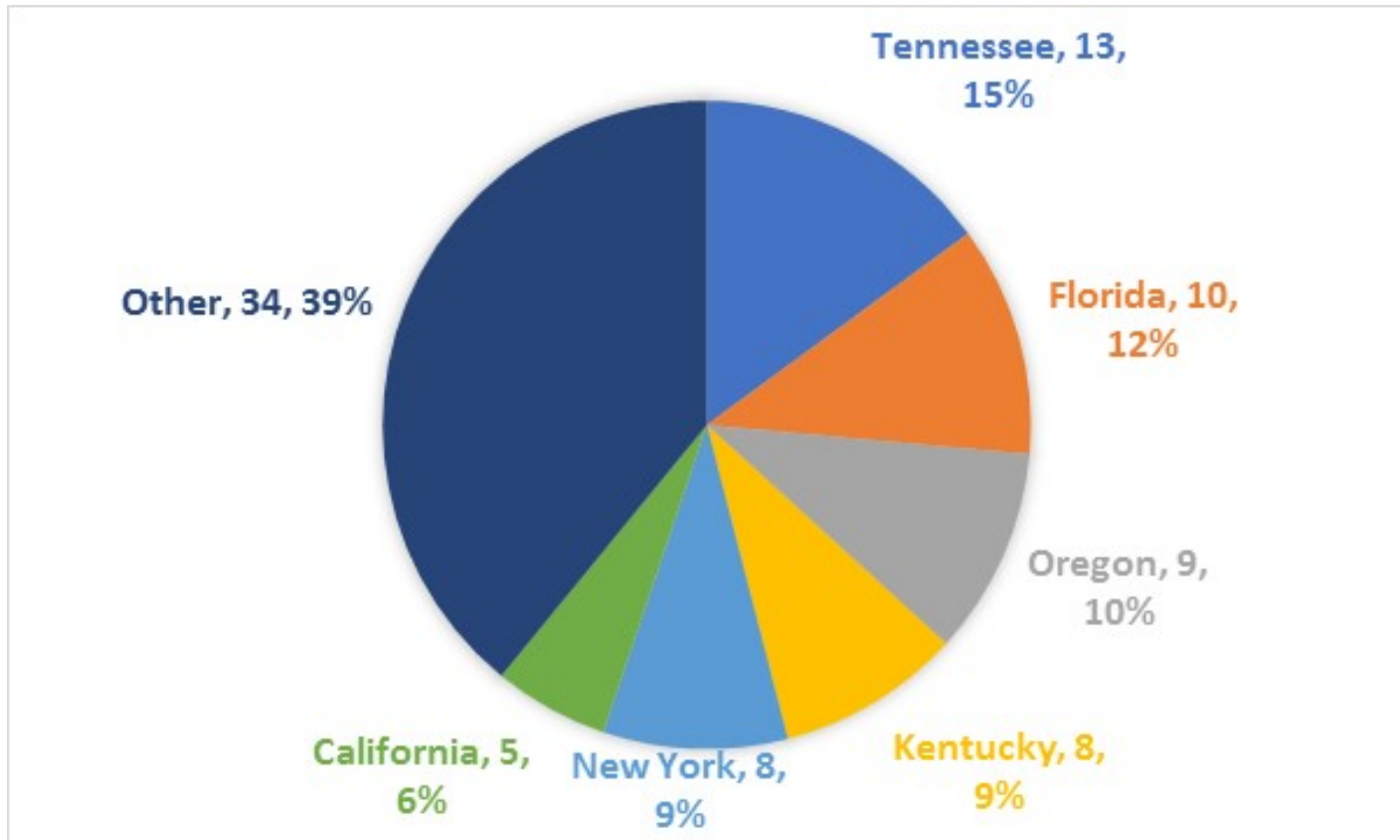
Janet S Walker
Brianna Masselli
Jennifer Blakeslee



Validation study

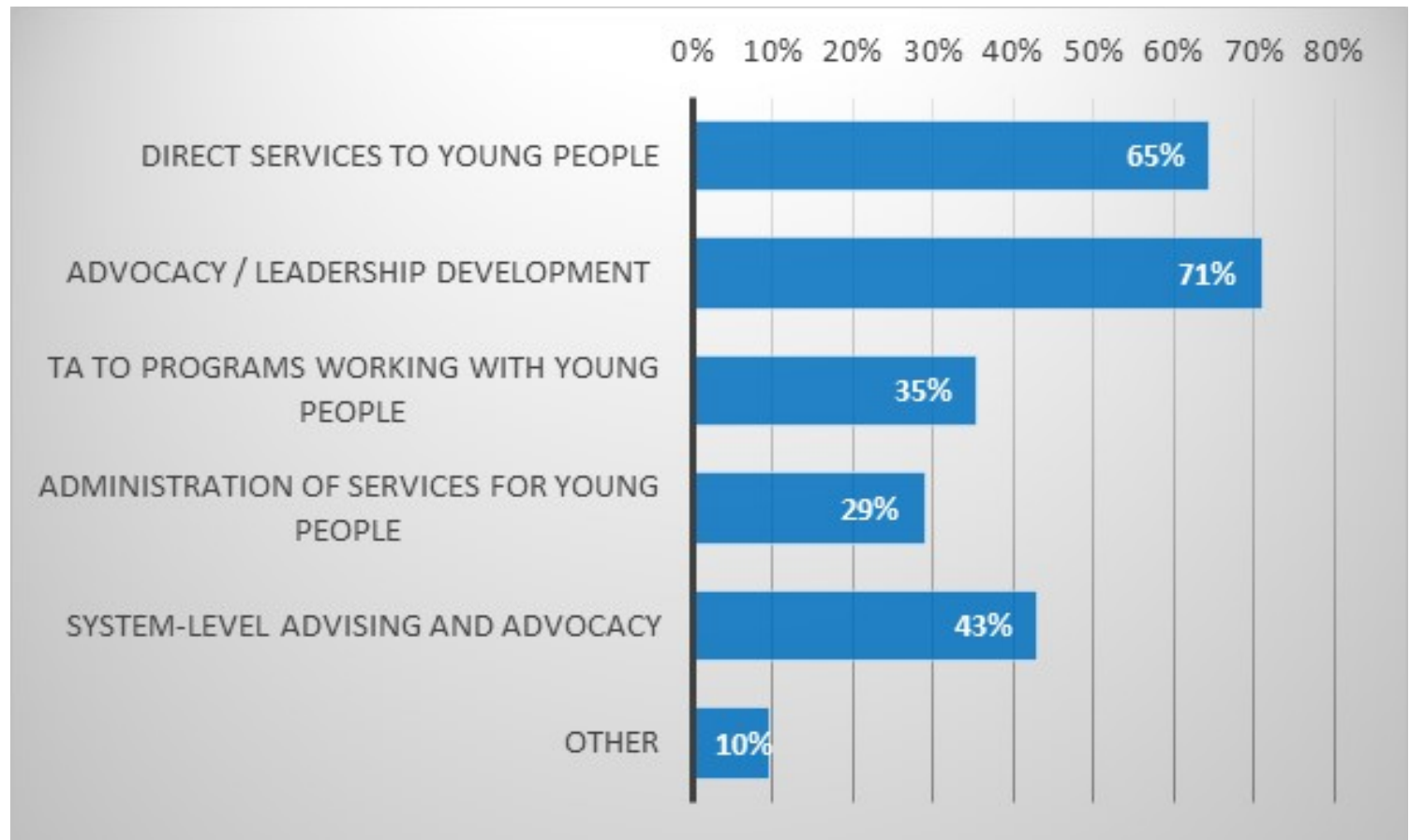
- Online survey including the Y-VAL and parts of two other assessments with published information on reliability/validity
- Recruitment using two strategies
 - Organizations recruited/registered—data collection began early February, ongoing
 - “Open call”—data gathering starting March 1
- Incentive: 1 in 50 chance at \$100 gift certificate
- 87 complete responses as of last week

Location of organization/agency



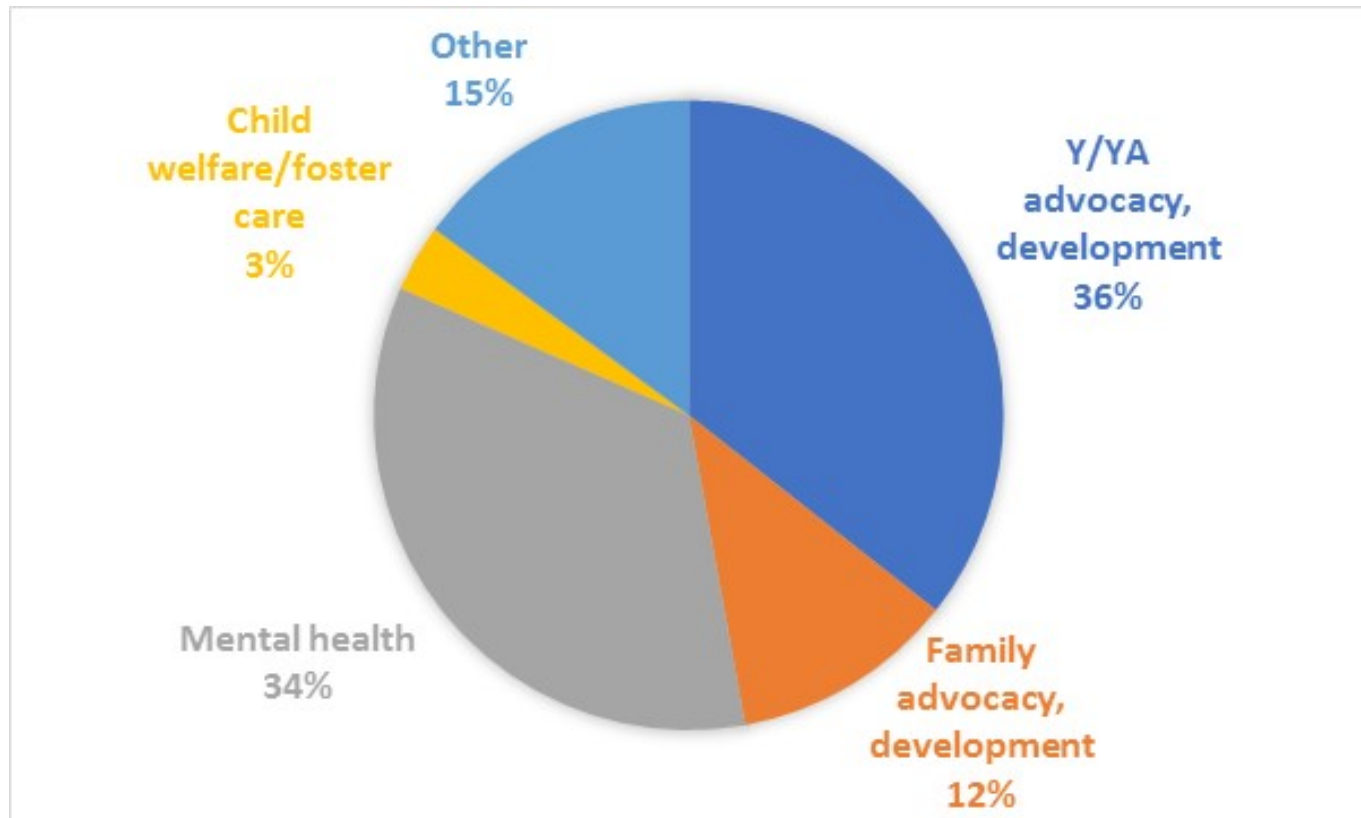
Organizations' activities

- Select all that apply



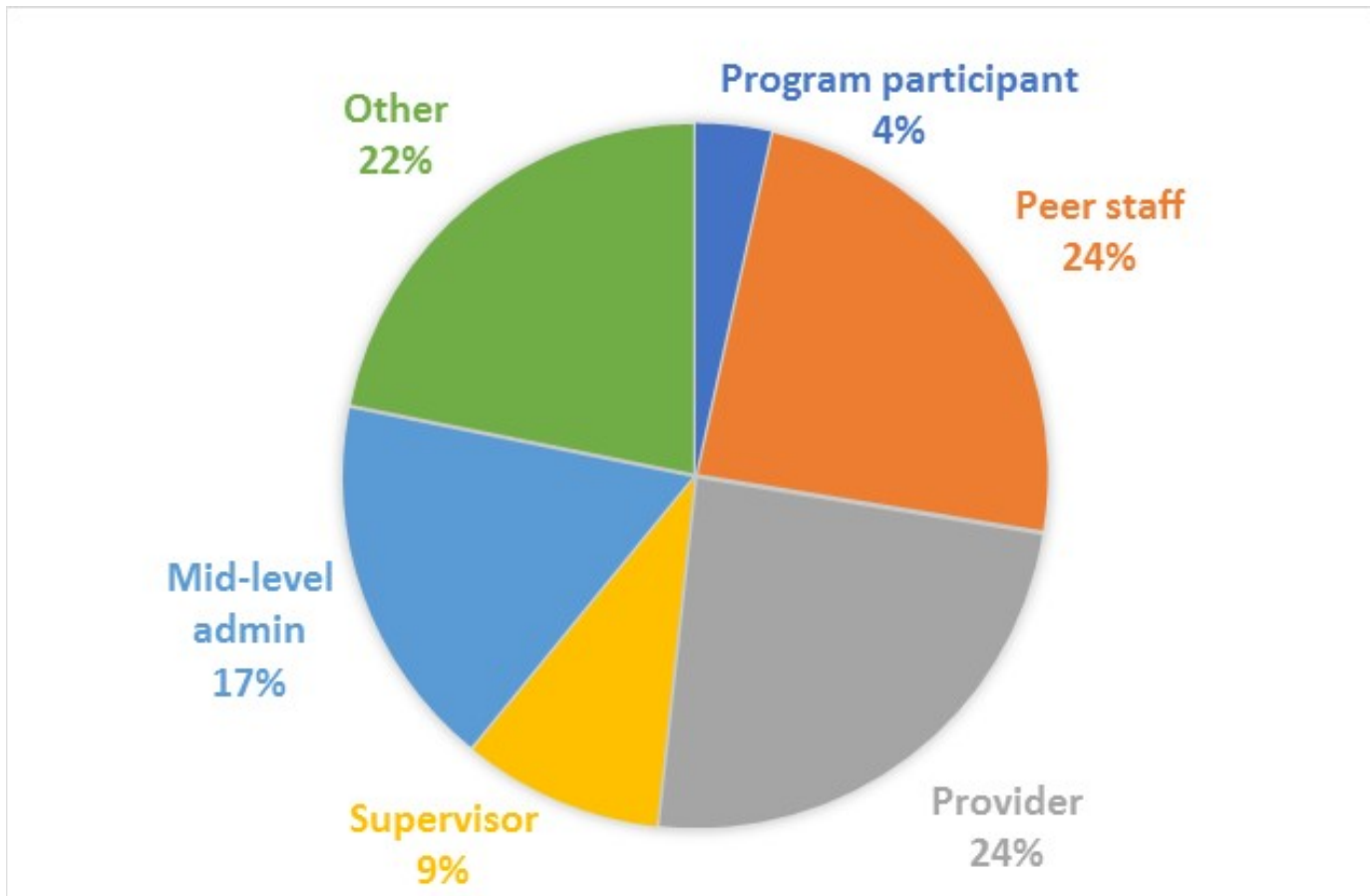
Organizational focus

- Select one



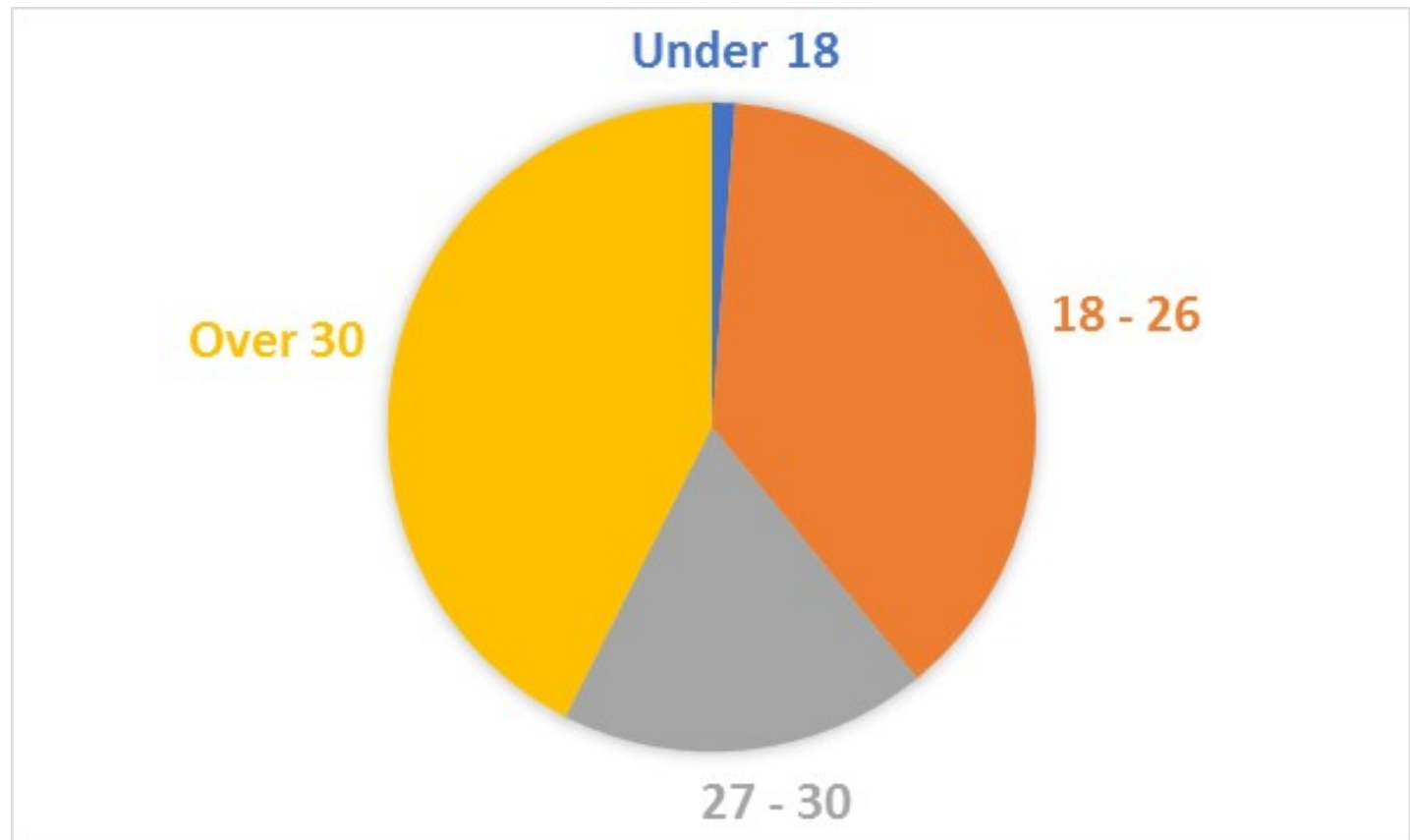
Respondents

- “Other” includes board members, consultants, higher-level managers



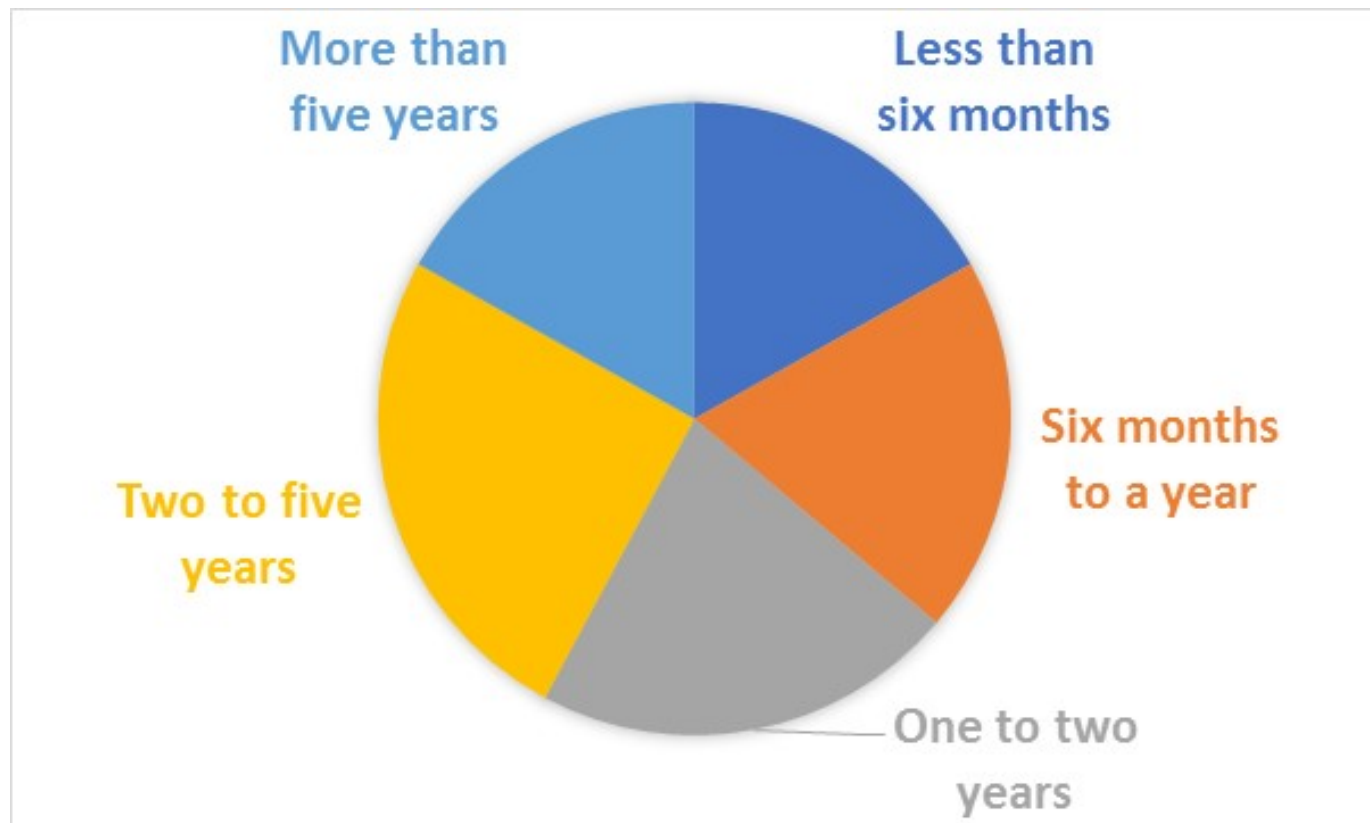
Respondents' ages

- Recruiting 16 and over, per IRB



Respondents' involvement in Y/YA advising/ decision making

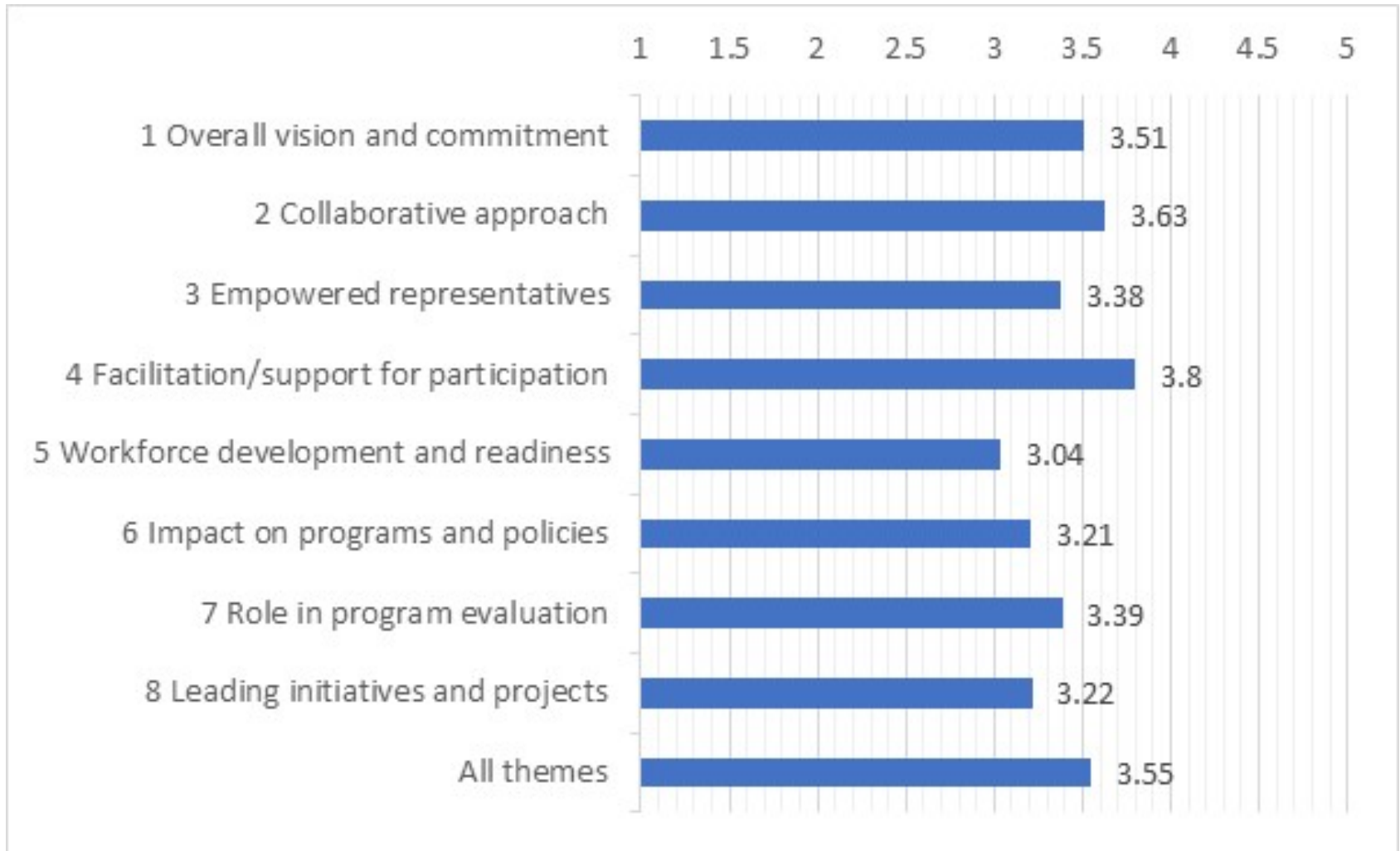
- More than a third involved for more than two years



Internal reliability

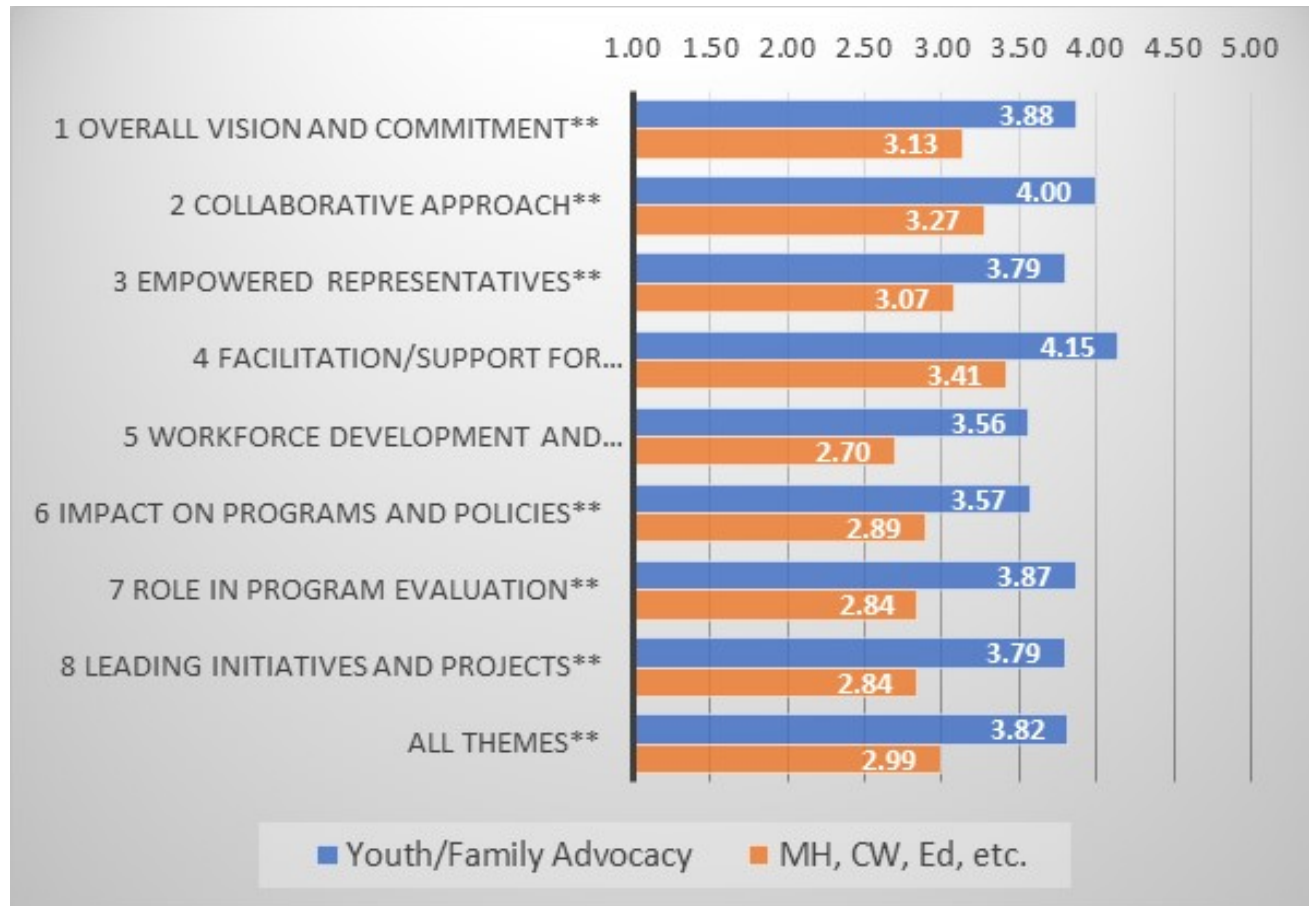
Theme	Items	Cronbach's α
1 Overall vision and commitment	8	0.93
2 Collaborative approach	5	0.89
3 Empowered representatives	5	0.94
4 Facilitation/support for participation	3	0.81
5 Workforce development and readiness	4	0.75
6 Impact on programs and policies	5	0.9
7 Role in program evaluation	4	0.85
8 Leading initiatives and projects	3	0.88
All themes	8	0.94

Theme means



Type of organization had significant impact on scores

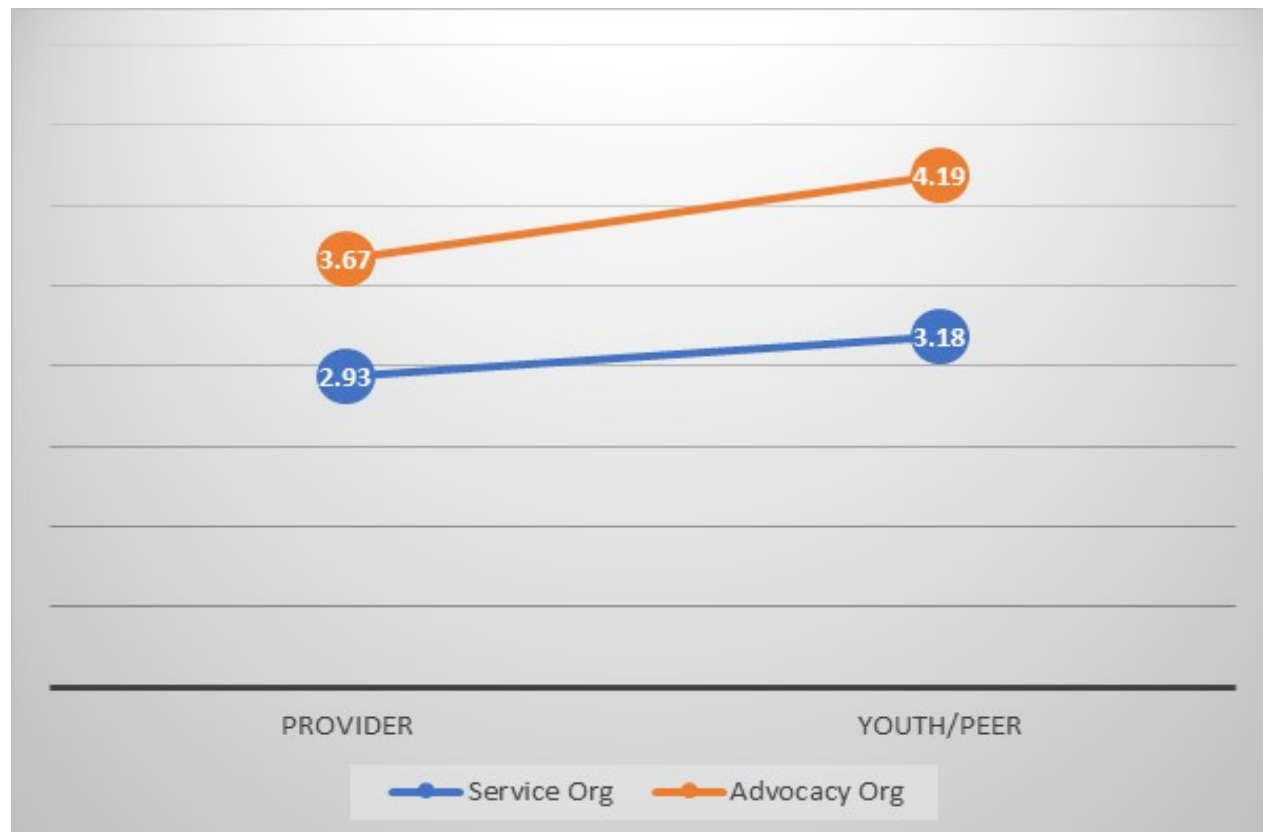
Theme mean and overall mean scores by organization type



What about possible impact of role?

- Univariate ANOVA
 - DV=Y-VAL grand mean score
 - Fixed Factors
 - Youth or Peer (versus other role) yes/no
 - Youth/Family Advocacy Organization (versus service organization) yes/no
 - Model: Main effects plus interaction

- Adjusted R² .20
- Type of organization significant <.01
- Youth/YA/Peer vs other, trend (~.08)
- Interaction n.s.
- Same pattern for themes



Other assessments

- Youth-Adult Partnerships in Community Programs (Zeldin et al., 2014) demonstrated strong factorial, discriminant, and concurrent validity for two subscales:
 - Supportive Adult relationships, 4 items, $\alpha=.84$ in their study, $\alpha=.77$ in our study
 - Youth Voice in Decision Making, 5 items, $\alpha=.85$ in their study, $\alpha=.81$ in our study
- Youth Program Quality Assessment (Hohmann & Smith, 2005), strong psychometrics for two constructs from the Youth-Centered Policies and Practices subscale
 - Influence on Settings and Activities (3 items), $\alpha= .77$ in our study
 - Youth-Centered Policies and Practices (5 items), $\alpha=.84$ in our study

Inter-scale Correlations

	Y-VAL	SAR	YVDM	Settings	Policy
Y-VAL	1	.609**	.676**	.716**	.775**
SAR	.609**	1	.765**	.487**	.467**
YVDM	.676**	.765**	1	.537**	.469**
Settings	.716**	.487**	.537**	1	.776**
Policy	.775**	.467**	.469**	.776**	1

** Correlation is significant at the 0.01 level (2-tailed).

Coming up next

- Finish data collection
 - Anticipate a more representative sample among “open call” respondents
- Analyses that account more fully for respondents from same organization
 - Y/YA and peers versus others within same organizations
- More refined examination of relationship between assessments

Pathwaysrtc.pdx.edu

PATHWAYS **POSITIVE FUTURES**

Home | About | Research | Training | Publications | Connect | Resources

SEARCH OUR SITE Search

NEWS

Upcoming Webinar: How Effective are Transition Programs for Youth and Young Adults: Findings from the Healthy Transition Initiative

Date/Time: Tuesday, June 21, 10am PDT/ 1pm EDT

National Outcomes Measures (NOMs) about the Healthy Transitions Initiative (HTI) may provide some answers. This webinar will report on NOMs data gathered from seven HTI grantees, 19 local communities, and over 1500 young people (ages 16-25). The analysis will explore change in terms of social connectedness, mental health symptoms, and daily functioning. Limitations of the data and their effect on interpretation of the results will also be discussed.

[Register »](#)

New Spanish Translations of Two Popular Pathways Publications

The Pathways publications "What Do You Want to Be when You Grow Up?" and "Things People Never Told Me" are now available in Spanish. "¿Qué Quieres Ser Cuando Crezcas?" offers young adults with serious mental health conditions guidance on career research. "Cosas Que la Gente Nunca Me Dijo" offers advice regarding finances, relationships, education, and employment to young people in foster care making the transition to adulthood.

[Download Cosas que la Gente Nunca Me Dijo »](#)
[Download ¿Qué Quieres Ser Cuando Crezcas? »](#)

New Focal Point on Early Psychosis Interventions

RTC UPDATES

Check out some of our recent newsletters »

Sign up for Pathways RTC's newsletter featuring the latest news and research on youth and young adult mental health:

Email Address *

First Name

Last Name

[Sign Up!](#)

RECENT PUBLICATIONS

Tip sheet (Spanish version): ¿Qué Quieres Ser Cuando Crezcas? [What Do You Want to Be when You Grow Up?] (PDF)

Tip sheet (Spanish version): Cosas



Research & Training Center for Pathways to Positive Futures. Portland State University

Acknowledgments/Funders



The development of the contents of this presentation were supported by funding from the National Institute of Disability and Rehabilitation Research, United States Department of Education, and the Center for Mental Health Services Substance Abuse and Mental Health Services Administration, United States Department of Health and Human Services (NIDRR grant H133B990025). The content does not represent the views or policies of the funding agencies. In addition, you should not assume endorsement by the Federal Government.

