



How to use GoToWebinar

- Move any electronic handheld devices away from your computer and speakers
- We recommend that you close all file sharing applications and streaming music or video
- Check your settings in the audio pane if you are experiencing audio problems
- During the presentation, you can chat questions to the webinar organizer, but these will be held until the end

A recording of this webinar will be available online at
<http://www.pathwaysrtc.pdx.edu/webinars-previous.shtml>



Reclaiming Futures: A model for communities helping teens overcome drugs, alcohol and crime

April 30, 2013



RECLAIMING FUTURES

Communities helping teens overcome drugs, alcohol & crime

Presenters

**Susan Richardson, National Executive
Director, Reclaiming Futures, Portland State
University**

**Margaret Soukup, Project Director,
Seattle-King County Reclaiming Futures**

Thank you to Pathways!



Poll Question #1

Who is represented on today's call and what is your role?

Mental Health

Substance abuse treatment or prevention

Child Welfare

Juvenile Justice

Other

Poll Question #2

Have you heard of Reclaiming Futures?

Yes

No

Poll Question #3

In your organization or network, is substance abuse treatment a partner on your core planning/implementation team?

Yes

No

A background image showing a person in a white shirt and tie, focused on writing on a document with a pen. The image is semi-transparent and serves as a backdrop for the text.

Learning Objectives

- Understand the need for a different approach
- Learn about the model and benefits of becoming a Reclaiming Futures community
- Find out more about Reclaiming Futures across the U.S. including Dayton, Anchorage, and Seattle

Poll Question #4

How many youth that need treatment actually receive treatment?

1 in 5

1 in 10

1 in 15

1 in 20

Poll Question #4 Answer:

How many youth that need treatment actually receive treatment?

1 in 5

1 in 10

1 in 15

1 in 20 (Correct Answer)

The Problem

- 1.8 million teens need treatment
- 1 in 20 actually receive treatment
- Approximately 343,000 young people are arrested annually for drug and alcohol related crimes
- Even for those who get treatment less than half are retained for 90 days
- Research shows that young people who use drugs and alcohol are more likely to drop out of school, get into fights, break the law and get arrested



What We Need: An Alternative Service Delivery System

- No national standards to identify needs and deliver services
- Promising models still regarded as specialty programs without broad dissemination
- There is uneven use of evidence-based practices by treatment programs
- No standards to integrate care across justice and treatment and other supports in the youth's life

Reclaiming Futures Mission

- More Treatment
- Better Treatment
- Beyond Treatment

The Beginning - Integrated Approach

- Launched national program and local pilots 10 years ago as initiative of the Robert Johnson Foundation
- Organized evidence base and made accessible to groups nationally
- Conducted research to establish benchmarks
- Created the national six-step model



Seattle, Washington

MODEL

Youth referred to the juvenile justice system for law violations



Youth eligible for treatment or supervision in the community



1 Initial Screening

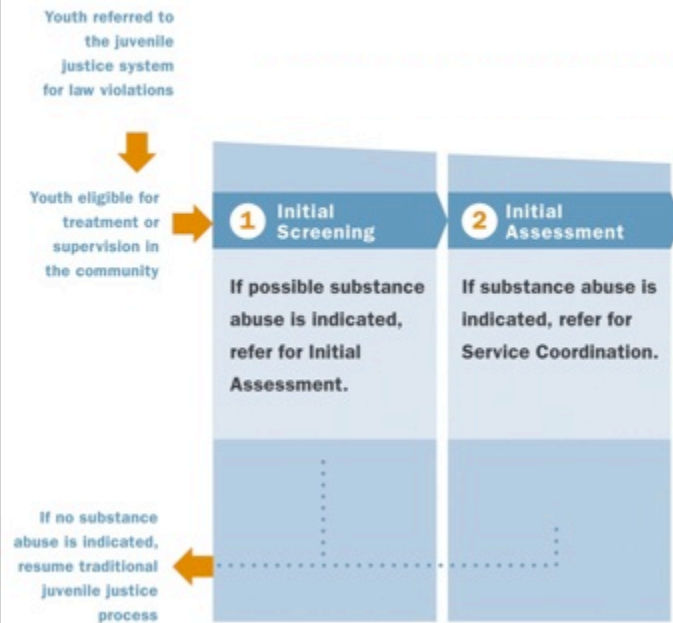
If possible substance abuse is indicated, refer for Initial Assessment.

If no substance abuse is indicated, resume traditional juvenile justice process



⋮

MODEL



Poll Question #5

How many youth in the juvenile justice system have co-occurring disorders (mental health and substance abuse disorders)?

25%

40%

50%

60%

Poll Question #5 Answer

How many youth in the juvenile justice system have co-occurring disorders (mental health and substance abuse disorders)?

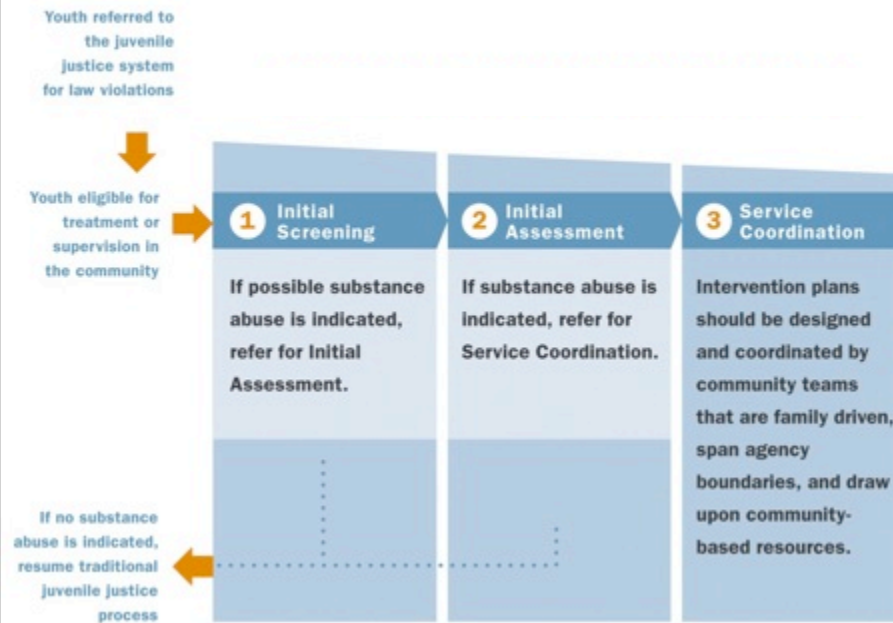
25%

40%

50% (Correct Answer)

60%

MODEL



MODEL

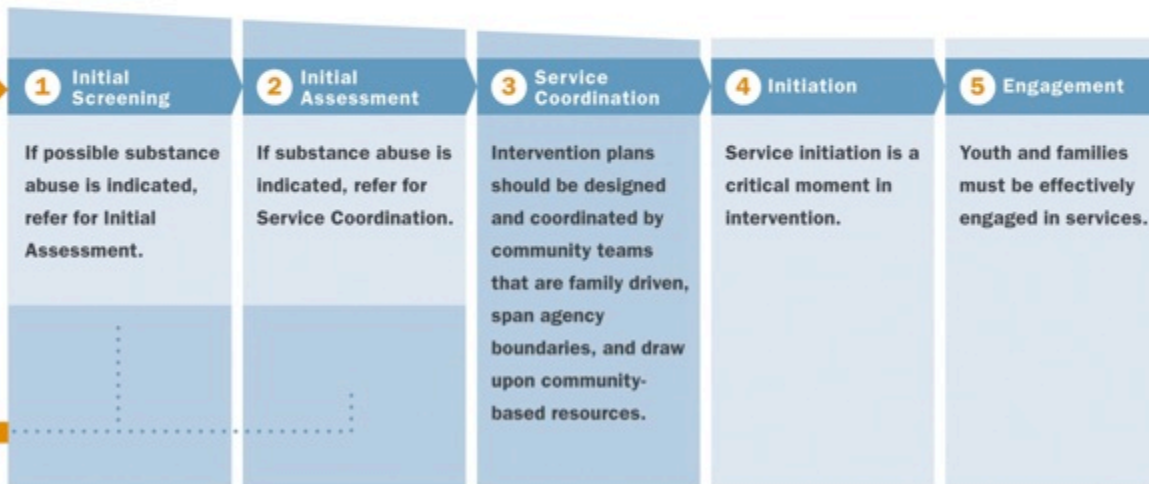


MODEL

Youth referred to the juvenile justice system for law violations

COORDINATED INDIVIDUALIZED RESPONSE

Youth eligible for treatment or supervision in the community



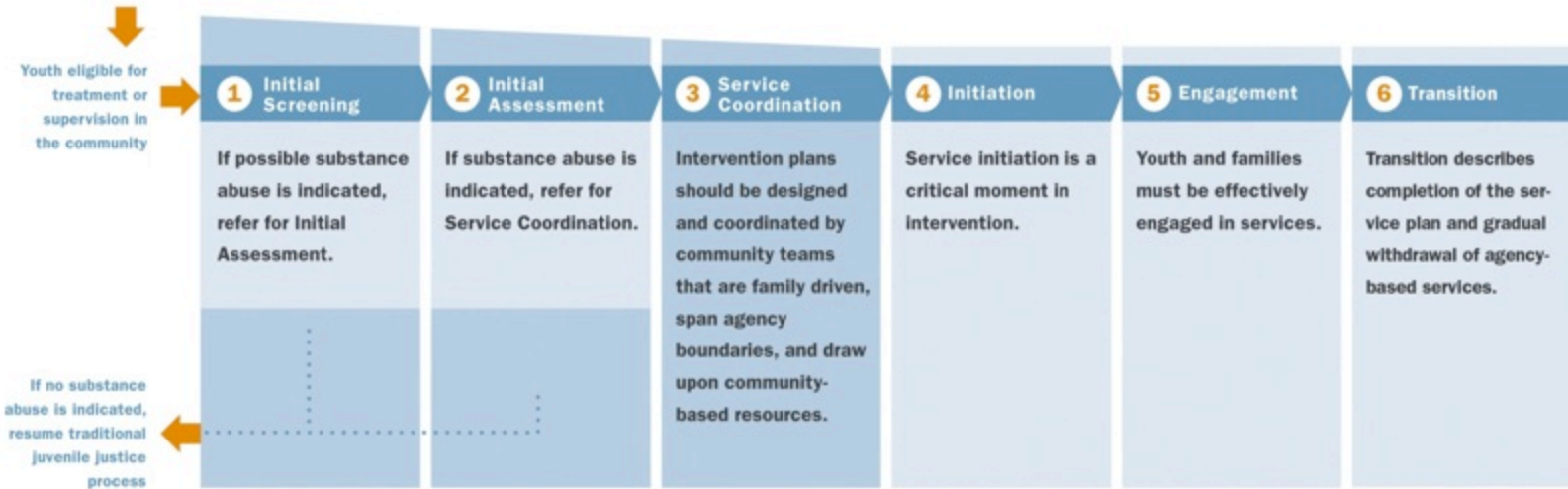
If no substance abuse is indicated, resume traditional juvenile justice process

MODEL

Youth referred to the juvenile justice system for law violations

COORDINATED INDIVIDUALIZED RESPONSE

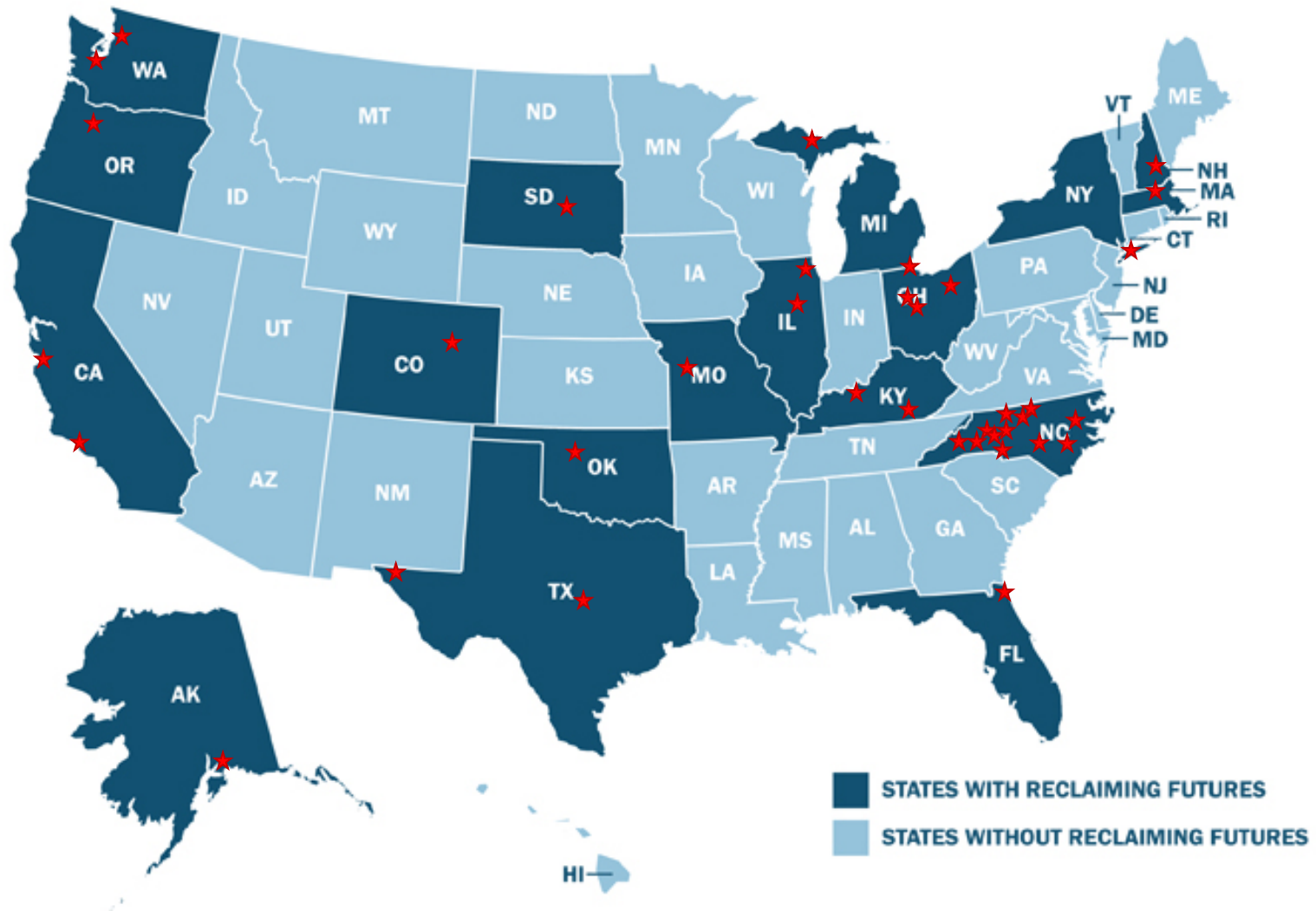
COMMUNITY DIRECTED ENGAGEMENT



Today

- Curriculum and leadership program
- Independent evaluation shows the model is working
- National learning collaborative with support and funding
- Additional investments by Office of Juvenile Justice and Delinquency Prevention, the Center for Substance Abuse Treatment, North Carolina Department of Public Safety, Kate B. Reynolds Charitable Trust and The Duke Endowment

37 Reclaiming Futures Communities



Three Questions for Evaluation

- Is it possible?
- Can we change the system?
- Do these changes positively impact young people's lives?



Evaluation

Jeffrey A. Butts, Ph.D.
Executive Director
Research and Evaluation Center
John Jay College of Criminal Justice
City University of New York
555 West 57th Street, Suite 605
New York, NY 10019
212-237-8486
jbutts@jjay.cuny.edu

John Roman, Ph.D.
Senior Research Associate
Justice Policy Center
Urban Institute
2100 M Street, NW
Washington, DC 20037
202-261-5774
jroman@ui.urban.org



Proven Approach: Preliminary Data

The Reclaiming Futures model increases days of alcohol and drug abstinence by 42%

Reclaiming Futures reduces the costs of crime to society by an average of over \$216,000 per youth per year



Source Note: Dennis, M., Moritz, K., Meckley, R., et al.. (2012). Evaluating the impact of adding the Reclaiming Futures to Juvenile Treatment Drug Courts. Normal, IL: Chestnut Health Systems. The data was supported by the Center for Substance Abuse Treatment (CSAT), Substance Abuse and Mental Health Services Administration (SAMHSA) contracts #270-2003-00006 and #270-2007-00004C using data provided by the following grantees: T117433, T117434, T117446, T117475, T117484, T117476, T117486, T117490, T117517, T117523, T117535, Reclaiming Futures (RF)/CSAT collaboration sites: T122838, T122856, T122874, T122907, T123025, T123037, T120921, T120925, T120920, T120924, T120938, T120941, and the Office of Juvenile Justice and Delinquency Prevention (OJJDP)/CSAT collaboration sites: 655371, 655372, 655373. The authors thank these grantees and their participants for agreeing to share their data to support this secondary analysis. The opinions about this data are those of the authors and do not reflect official positions of the government or individual grantees. Please direct correspondence to Michael L. Dennis, Chestnut Health Systems, 448 Wylie Drive, Normal, IL 61701, mdennis@chestnut.org 309-451-7801.

Leadership: A Community-Directed Approach

- Judicial
- Community
- Alcohol and drug treatment
- Juvenile Justice
- Project director

Questions?

?

?

?

?

?



Montgomery County, Ohio - Vision

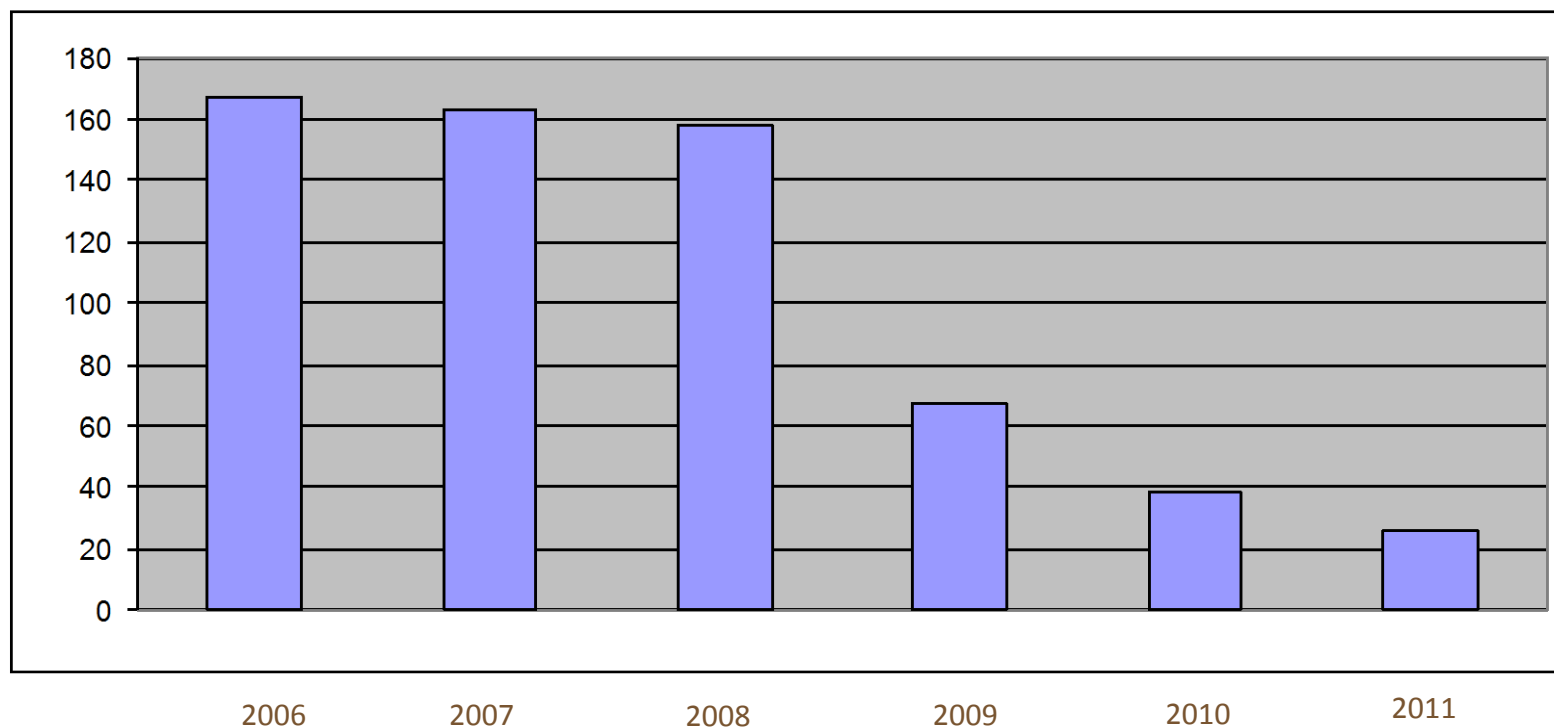
- Create and implement a seamless, innovation system of treatment using strength-based philosophies and practices
- Integrate Natural Helpers and community members across the system of care for meaningful restorative justice activities
- Create positive futures with court-involved youth and their families by building community solutions



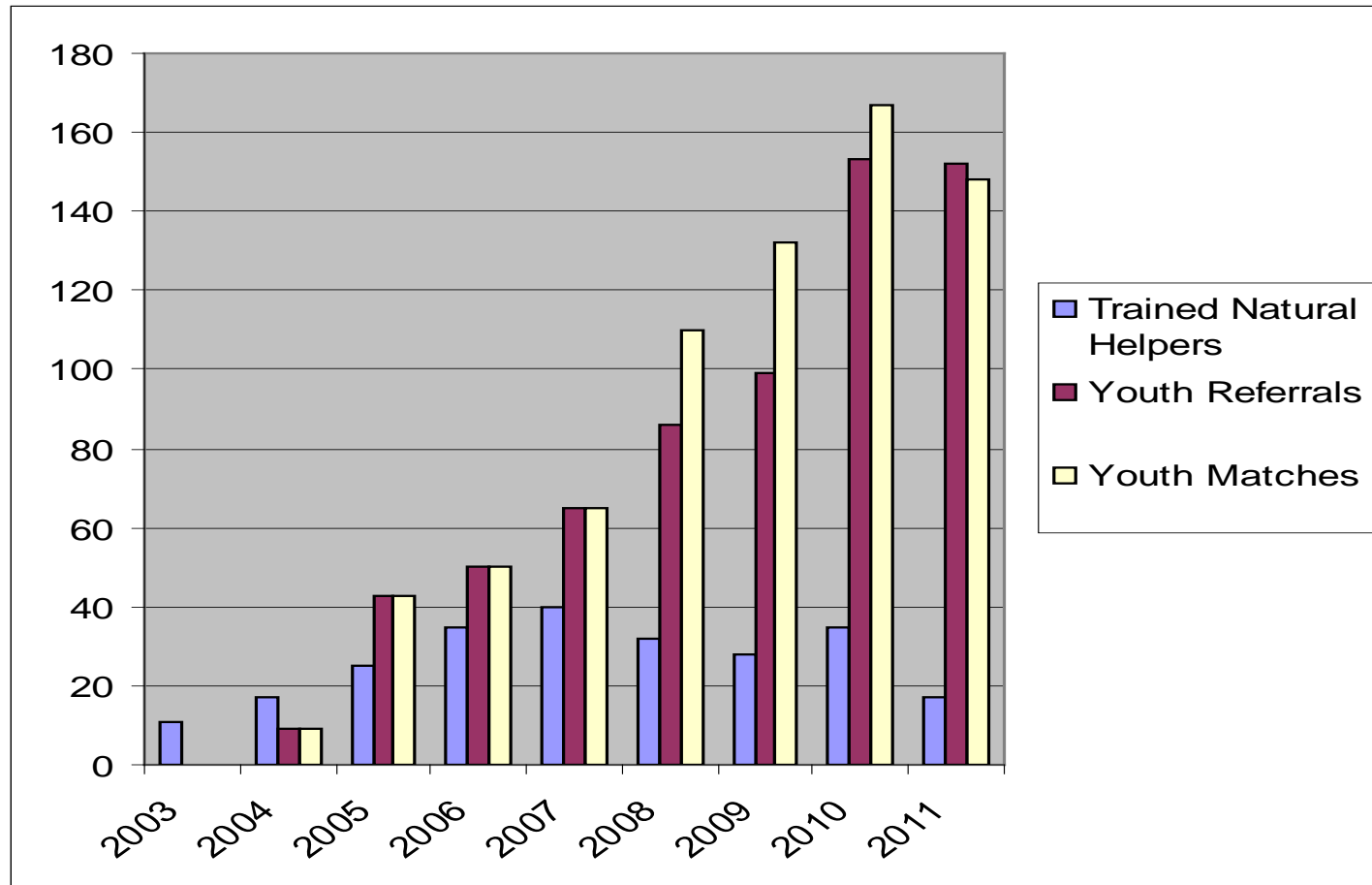
Reclaiming Futures Montgomery County, Ohio - Beliefs:

- All Youth can succeed
- Everyone shares responsibility for youth success
- Systems do change when people's beliefs change

Reclaiming Futures - Montgomery County Secure Commitments to the Department of Youth Services



Reclaiming Futures Natural Helper Program History Montgomery County Juvenile Court 2003-2011



Anchorage Reclaiming Futures Vision

- Strengthening Circles: The Eskimo Blanket Toss
- Many hands pulling together to raise the youth



Anchorage Reclaiming Futures

- United justice and community partners
- Created an operating agreement
- Introduced team approach to juvenile's case
- Involved families
- Developed positive youth development opportunities
- Brought in new partners to sustain the model

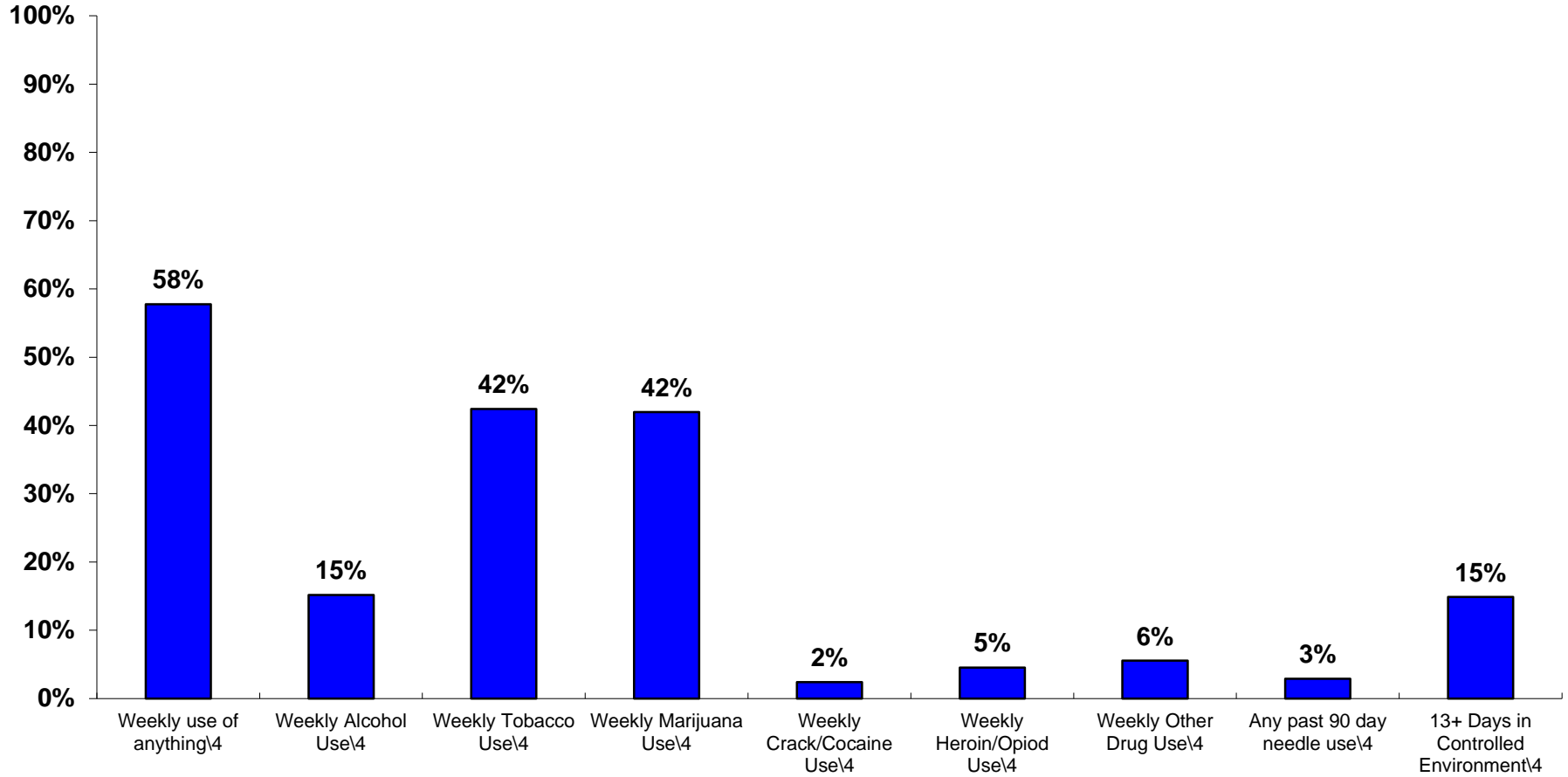


Seattle-King County, WA

**Margaret Soukup, Project Director,
Reclaiming Futures**

Site: 1 Total

Weekly Substance Use

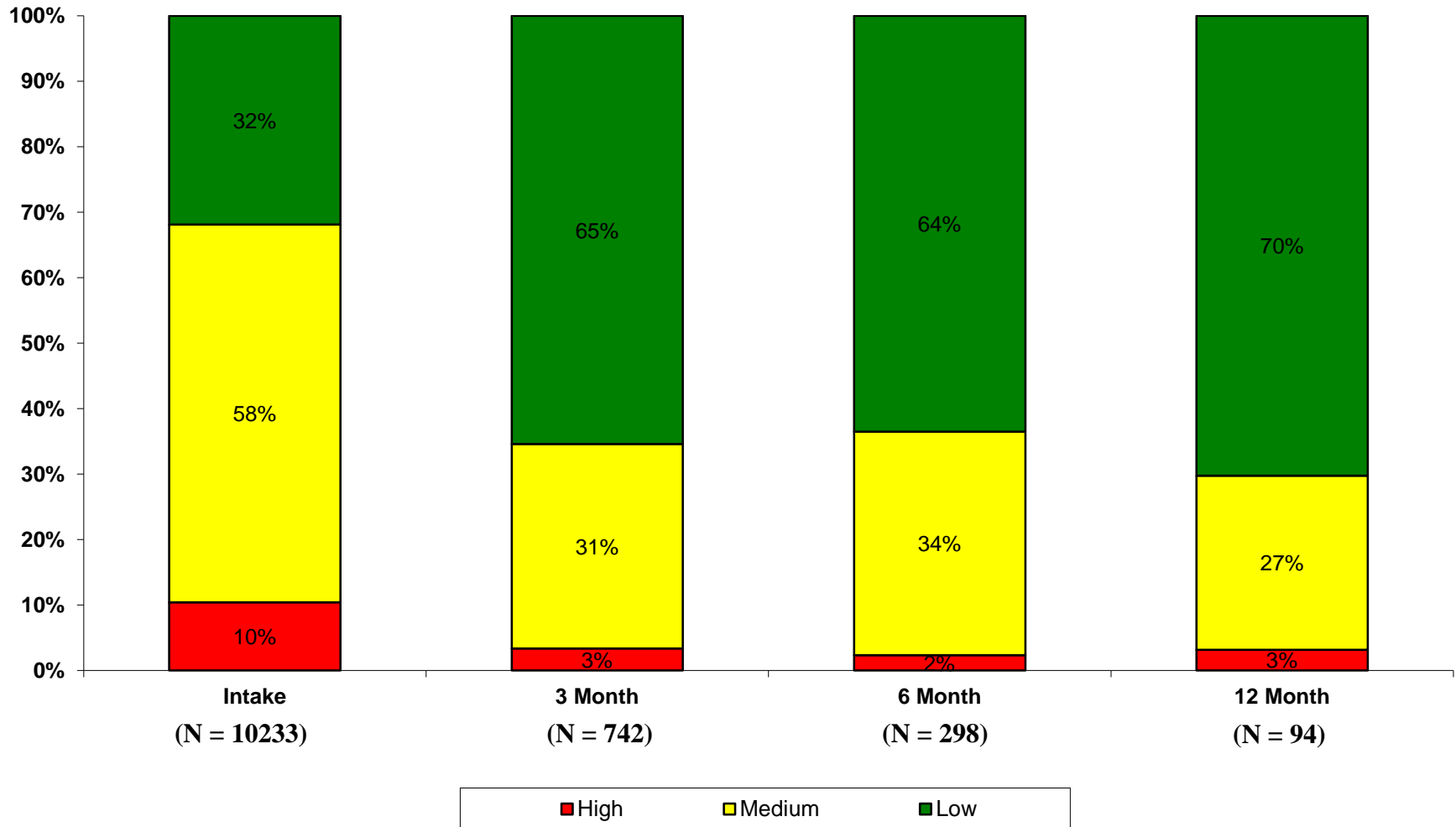


N = 10233

¹ During the past 90 days

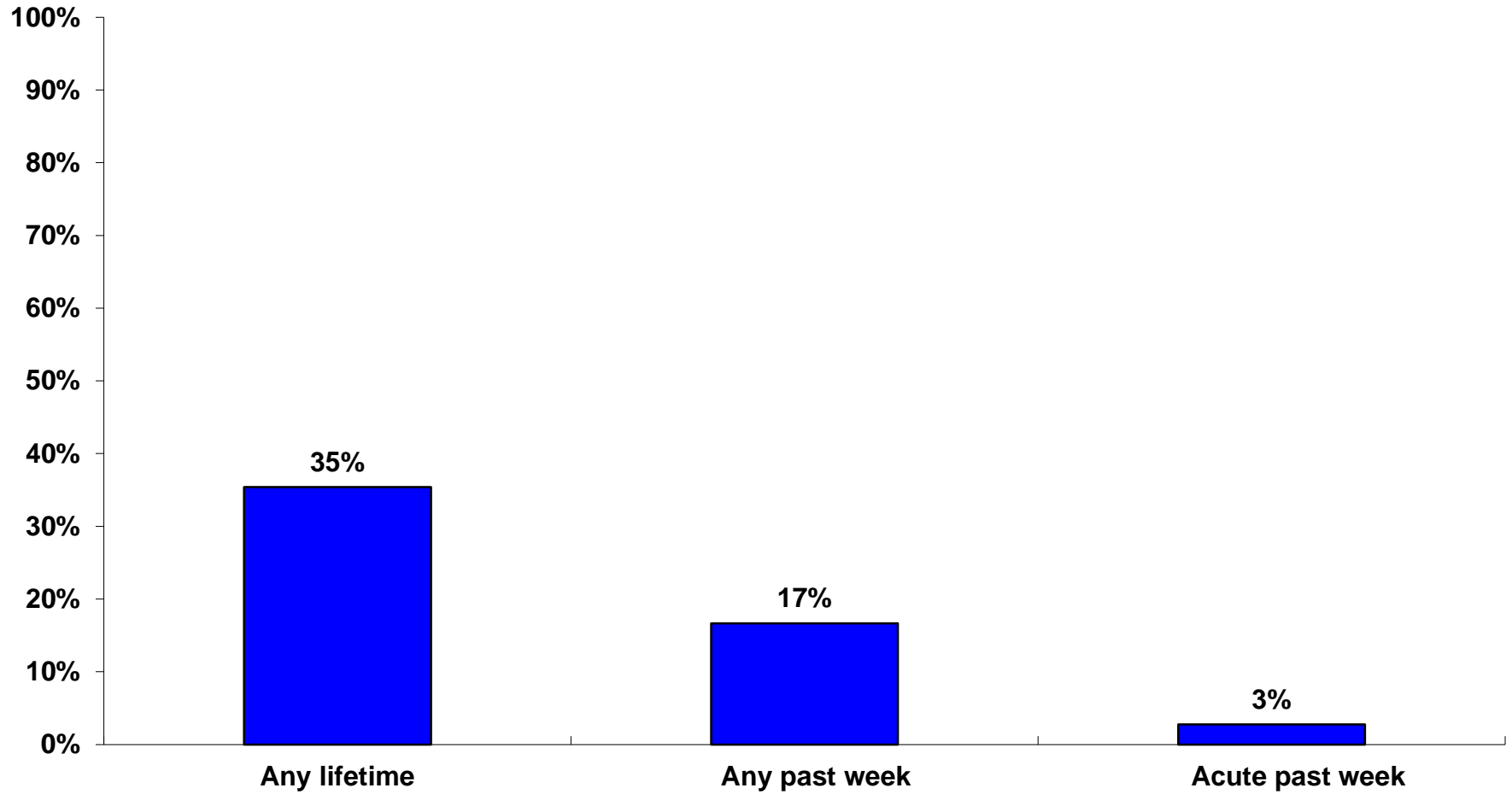
Site: 1 Total

Substance Problems



Site: 1 Total

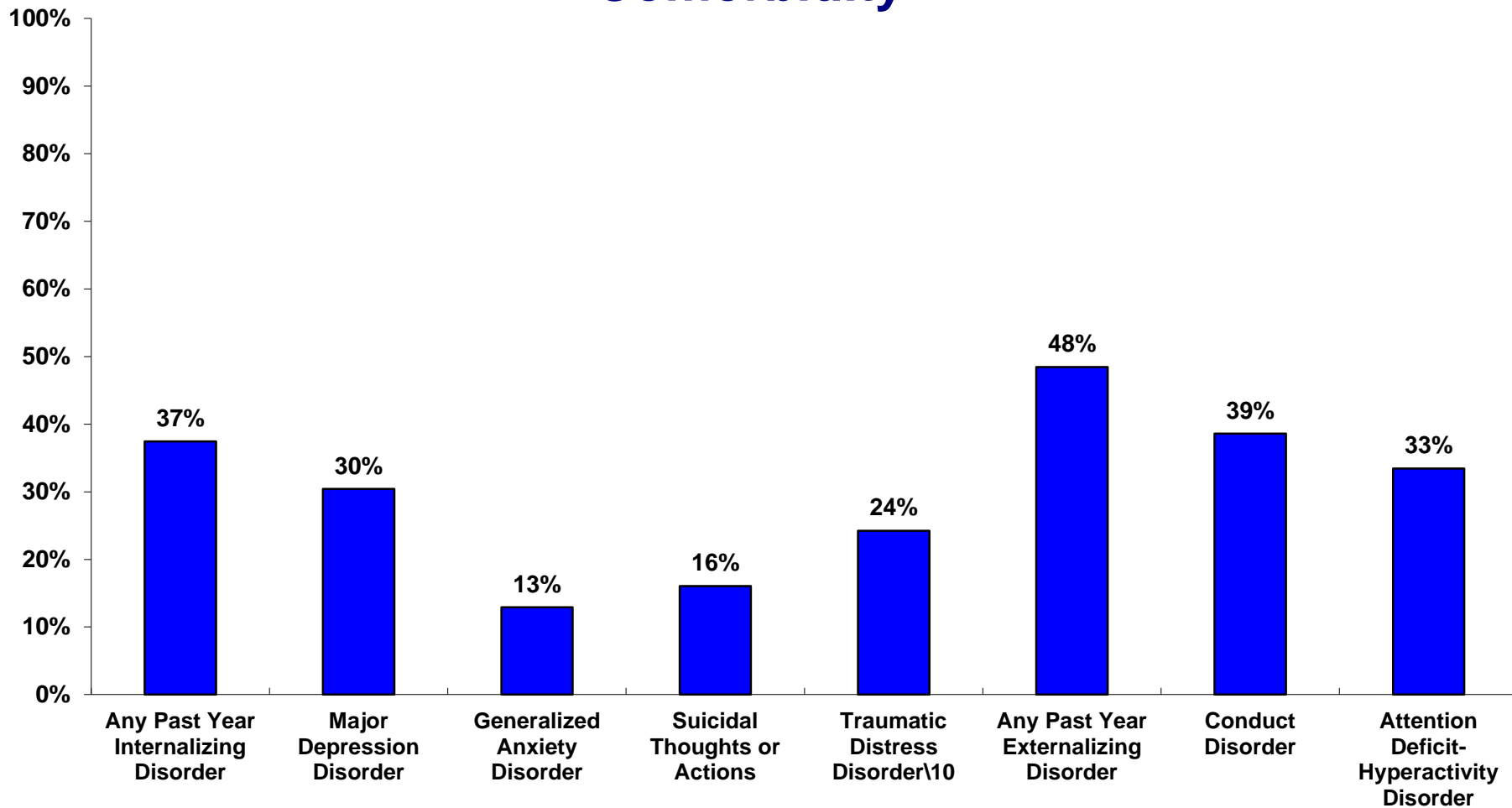
Withdrawal Symptoms



N = 10233

Site: 1 Total

Comorbidity



N = 10233

\10 Post traumatic distress, acute traumatic distress or disorders of extreme stress not otherwise specified



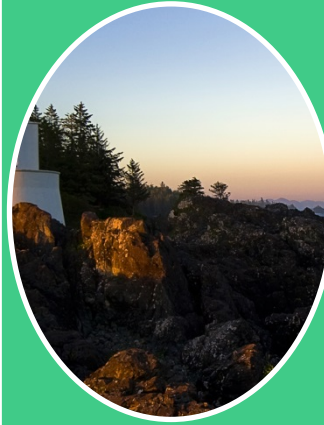
Assessment
(GAIN)



Engagement
and
Motivation
(MI)



Treatment
Planning
(MATR)



Individual
Treatment
(ACRA, CRA)



Group
Treatment
(Seven
Challenges,
MRT)



CLINICAL EXCELLENCE

2012 – MATR Treatment Planning

2011 -- Clinical Supervision

2011 – Motivational Interviewing

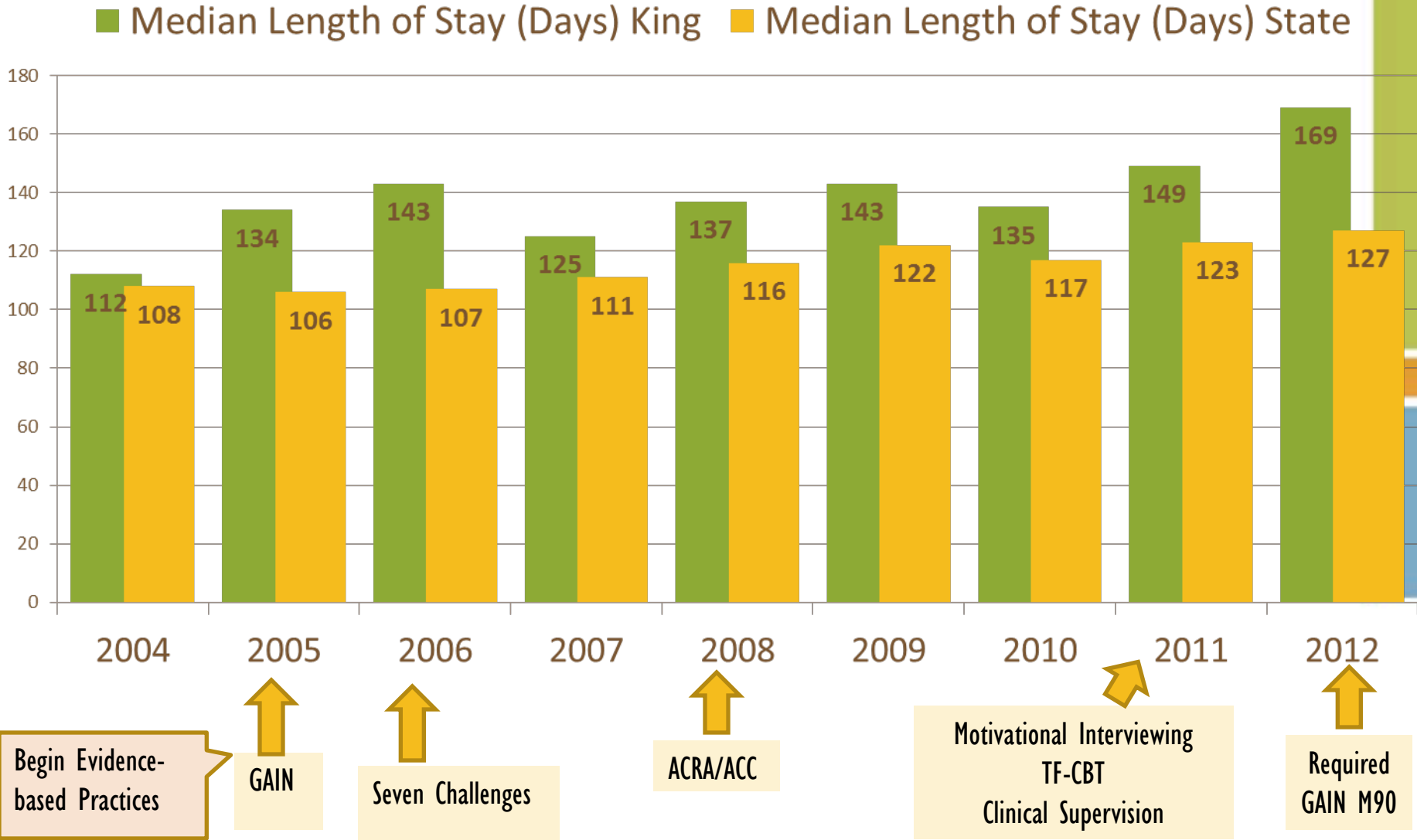
2010 – ACRA and CRA

2009 -- MRT

2006 -- Seven Challenges

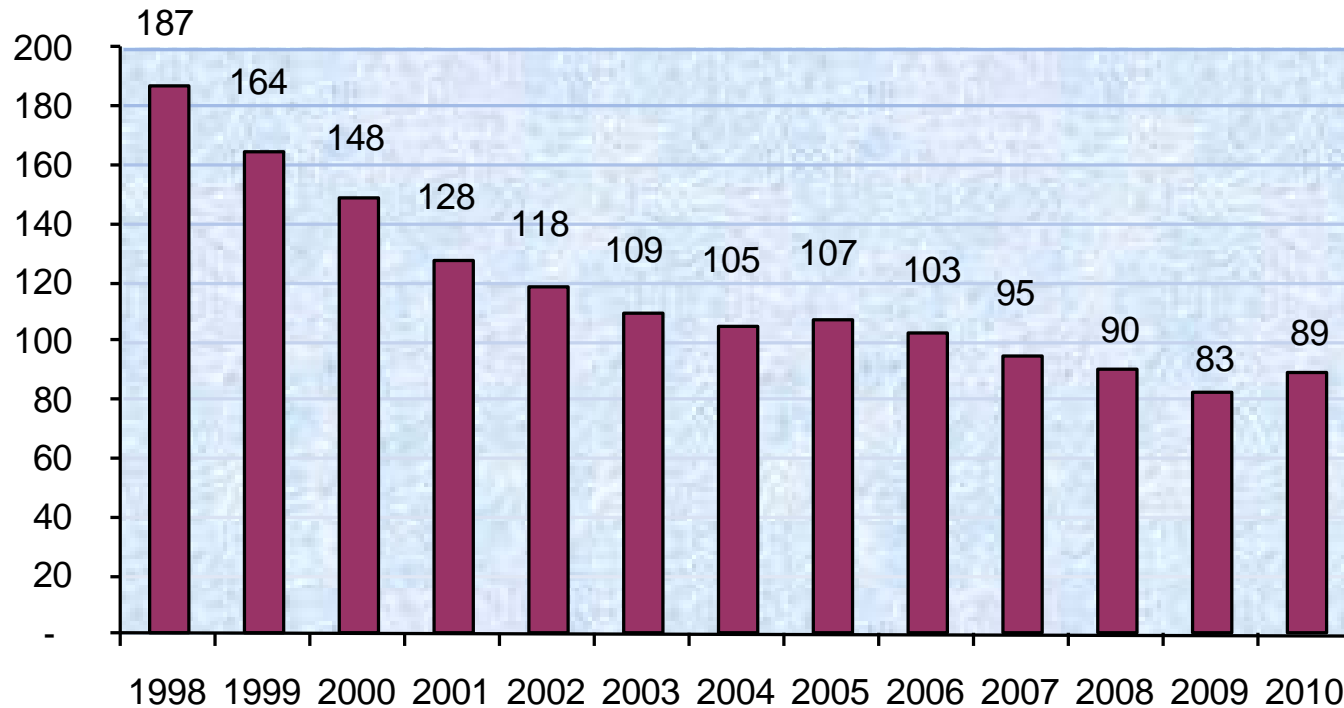
2005 --GAIN Assessment

King County Youth Retention Data



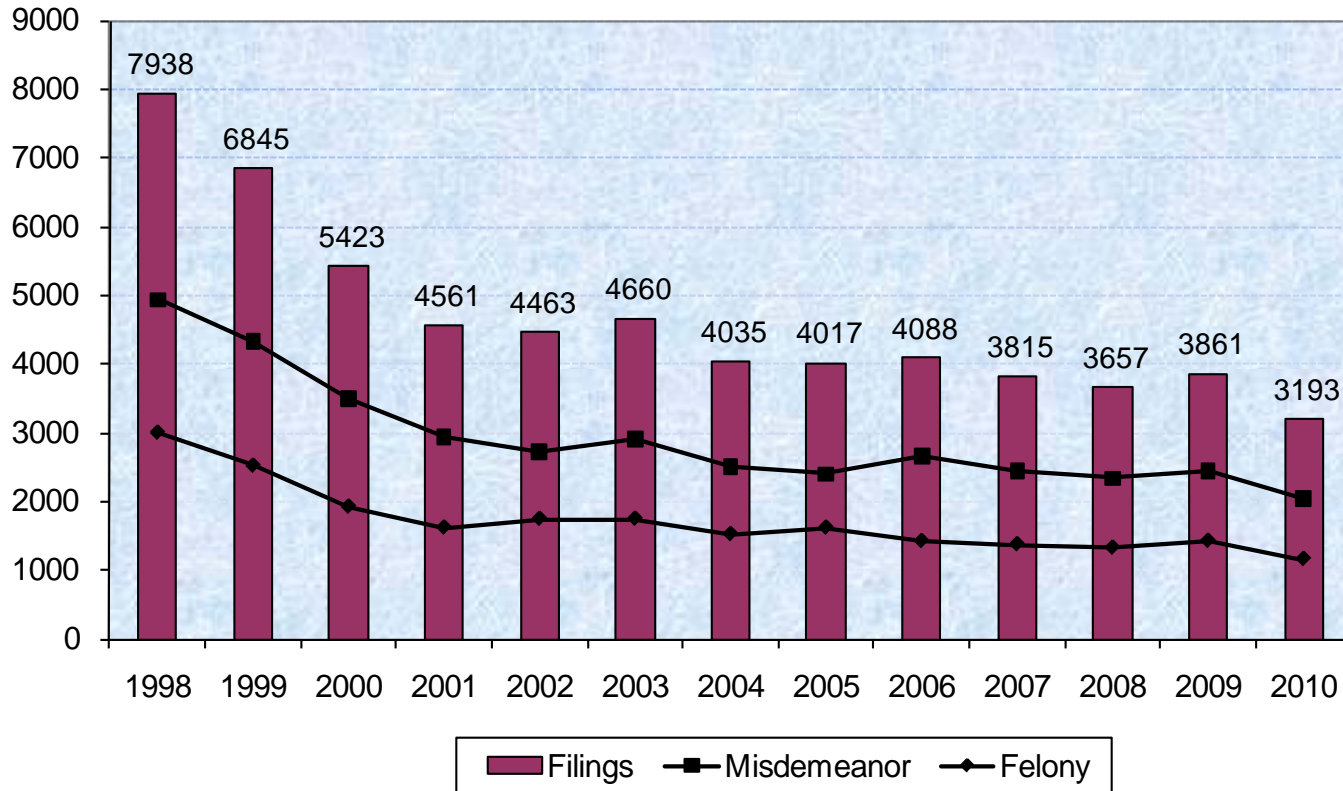
1998-2010 Detention Population

**King County Secure Juvenile Detention Population
1998-2010**



1998-2010 KC Offender Filings

Juvenile Offender Filings -- King County
1998 - 2010





...the ...
...the ...
...the ...

...the ...
...the ...
...the ...

...the ...
...the ...
...the ...

...the ...
...the ...
...the ...

...the ...
...the ...
...the ...

...the ...
...the ...
...the ...

A photograph of a woman with long brown hair driving a car. In the rearview mirror, a young child is visible in the back seat. The image is semi-transparent, allowing text to be overlaid.

Reclaiming Futures Communities Receive

- Technical assistance
- Tool kit
- Training
- Webinars
- Annual leadership institute
- Fellowship support
- Coaching

The challenge is great, but we are here to help.





Visit us online



[site log in »](#)

[subscribe »](#)



[home](#)

[the model](#)

[stories](#)

[sites](#)

[publications](#)

[webinars](#)

[jobs, grants & events](#)

[about](#)

[Dashboard](#)
[New Blog Post](#)



BRING RECLAIMING FUTURES TO YOU »

Now is the time to help young people struggling with drugs, alcohol and crime. Partner with us to bring Reclaiming Futures to your community!

THE MODEL »

Reclaiming Futures is a model for improving juvenile justice through community integration.

SEARCH

Google™ Custom Search

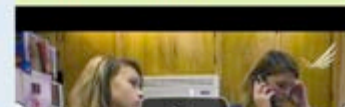
WEBINARS »

Get access to webinars with top experts juvenile justice, alcohol and drug treatment, and related fields.

BRING RECLAIMING FUTURES TO YOU »

Help teens struggling with drugs, alcohol, and crime.

VIDEO STORIES:



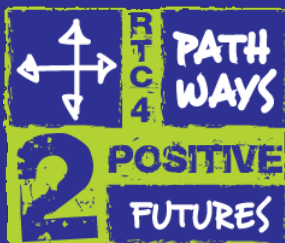
Contact us

Susan Richardson

National Executive Director
Reclaiming Futures
Portland, Oregon
susan.richardson@pdx.edu
503-725-8914

Margaret Soukup

Project Director, Seattle-King County Reclaiming Futures
Science to Service/Workforce Development Coordinator
Project/Program Manager III
Mental Health, Chemical Abuse and
Dependency Services Division (MHCADSD)
401 Fifth Avenue, Suite 400
Seattle WA 98104
margaret.soukup@kingcounty.gov
206.263.8958



Acknowledgments/Funders



The development of the contents of this presentation were supported by funding from the National Institute of Disability and Rehabilitation Research, United States Department of Education, and the Center for Mental Health Services Substance Abuse and Mental Health Services Administration, United States Department of Health and Human Services (NIDRR grant H133B090019). The content does not represent the views or policies of the funding agencies. In addition, you should not assume endorsement by the Federal Government.

